



## **AGENDA**

### **THE KENT - ASHFORD LOCAL BOARD**

**Thursday, 28 February 2008, at Tenterden Infants School, Recreation  
Ground Road, Tenterden TN30 6RA**

Ask for: **David Geoghegan -** Telephone: **07786 191667**  
**Community Liaison Manager** **david.geoghegan@**  
**kent.gov.uk**

**Starting at 6.30 pm. Doors open at 6:15pm**

- A1. Welcome to the meeting - Mr M Angell Chairman**
- A2. Declarations of Interests by Members in Items on the Agenda for this Meeting**
- A3. Question Time - Your Opportunity to ask questions about local public services**  
  
**Next will be a series of presentations followed by your opportunity to ask questions**
- A4. An Overview of the Communities Directorate**  
**Presentation from Mike Hill, Cabinet for Community Services**
- A5. Tenterden Library - New Location, New Start - Presentation - See Attached (Pages 1 - 16)**
- A6. Ashford Gateway Plus - Presentation - See Attached (Pages 17 - 28)**
- A7. Library Modernisation - Presentation - See Attached (Pages 29 - 34)**
- A8. Future Local Board Meetings in 2008/09 - Dates, venues and possible agenda topics**
- A9. Any Other Business notified to the Chairman prior to the meeting**

**Wednesday, 20 February 2008**

**County Councillors for Electoral Divisions within the Ashford Area:**

<b>Mike Angell</b>	<b>- Ashford Rural South</b>
<b>Charles Findlay</b>	<b>- Ashford Rural East</b>
<b>Mike Hill, OBE</b>	<b>- Tenterden</b>
<b>Richard King</b>	<b>- Ashford Rural West</b>
<b>George Koowaree</b>	<b>- Ashford East</b>
<b>Tylden Reed</b>	<b>-</b>
<b>Derek Smyth</b>	<b>- Ashford Rural South</b>
<b>Elizabeth Tweed</b>	<b>- Ashford Central</b>

**Tylden Reed**

-

# Tenterden



# New Location, New start

- Re-location to new site
- Designed to combine the following range of services on one site:
- Library
- Ashford Borough Council Services
- Tourist Information
- Post Office
- Gateway



# Tenterden Library

- Current library presents many barriers for all our customers to access

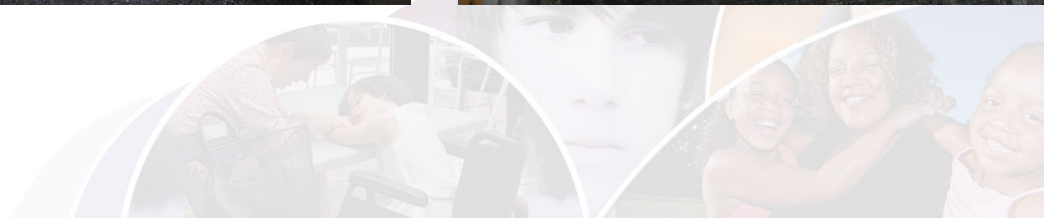


- The main library entrance is only accessible by steps
- Some of the paving slabs are also cracked and uneven





- For anyone unable to use the steps there is a long route round the building





- Once Inside the library the space is quite cramped and cluttered









# Tourist Information Centre

- Currently only available for 5 months a year
- In new location will be available all year round
- Improved and increased range of services offered to visitors and to local tourism businesses

- Tourist Information Centre currently operates from the Town Hall









# Fairings



- This building also suffers from poor access both externally and internally











# Moving Location

- The new location will enable Ashford Borough Council to offer its Tenterden customer-facing services in a conveniently located and accessible building
- New location will be easily accessible by all our customers
- Improved and modernised Library space
- More usable space to provide extension activities such as Baby Bounce & Rhyme time and local history classes
- Customers will be able to access all services in one place

This page is intentionally left blank



# Ashford Gateway Plus





# Ashford Gateway Plus

- We are looking to build a new facility for the people of Ashford on the site of the current library, designed to combine the following range of services on one site:
- The existing Ashford Gateway
- Library
- Registrars
- Adult Education
- Adult Social Services facilities
- Café

# Consultation

- The architect has been working up initial design proposals which we are asking for comment on.
- The plans are at a very early stage so there will be plenty of time for you to be involved
- You will also be able to view the designs on a web page specially created for this project;  
[www.kent.gov.uk/ashfordgatewayplus](http://www.kent.gov.uk/ashfordgatewayplus) .

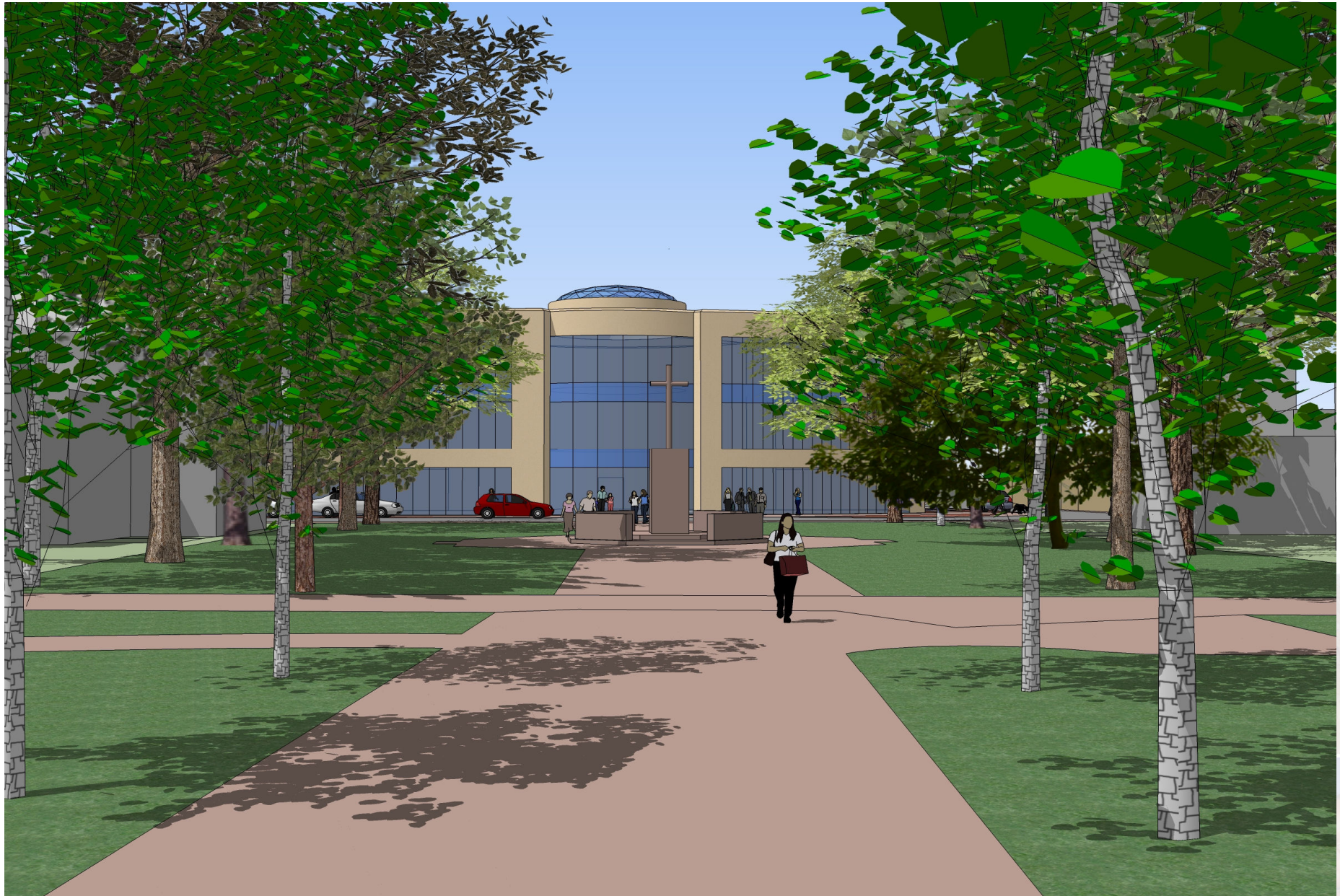
# Initial Design Proposals

































This page is intentionally left blank

connect

with Libraries & Archives

# Library Modernisation





# The Journey of Transformation

- Kent Libraries key local target;
- “Transform Kent libraries in to centres for the community with on line access to virtual learning opportunities, better book stock and combining them with other county services”
- Our core objective is to have a network of welcoming and attractive libraries which are centres for local communities
- Scope is more than just redecorating, we look at how we deliver all our services.

**connect**

**with Libraries & Archives**

# Already Completed



Coldharbour Library, Gravesend

Staplehurst, Maidstone





**connect**

**with Libraries & Archives**

# Sevenoaks Kaleidoscope



**connect**

**with Libraries & Archives**

# New Ash Green Library





This page is intentionally left blank